

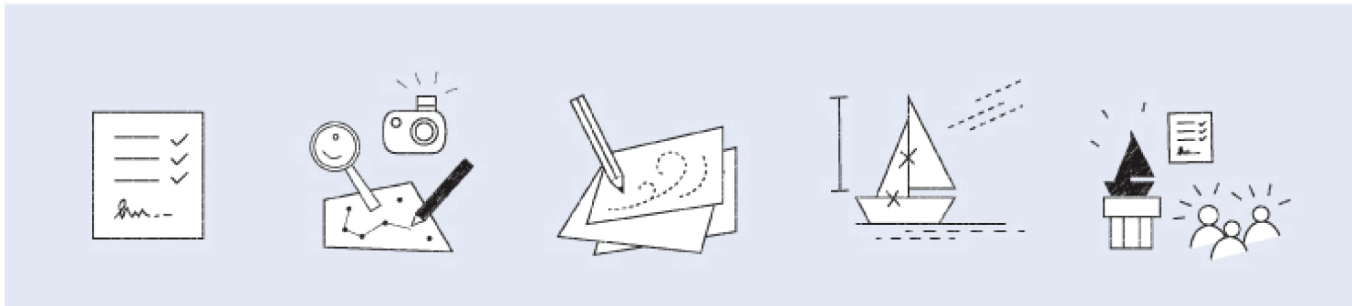
R◊WENA MURRAY

Specialist Courses

- Design -

- Gemmology -

Course Overview



‘The Design Process’

The purpose of these courses is to give participants an insight into the process of design, how to develop ideas and then realise these in concrete form, with a focus on methodologies for commercial design.

The module consists of theoretical presentations, mini-project briefs, field-trips, individual tutorials, modelmaking workshops and regular group critiques to discuss project outcomes.

In doing so, participants are exposed to different ways of working as well as the giving and receiving of feedback - instrumental to successful design.

Course Options

- Introduction -

(2 Days)

Introduction to the Design Process

- Product Analysis
- Concept Development
- Aesthetics: Design elements & Principles
- Design vs. Redesign

- Practical -

(5 Days)

1. The Design Brief

- Design Objectives & Targets

2. Research

- Excursion: Inspiration & Observation
- Moodboards & Design direction

3. Concept

- Describing design concepts
- Unique Selling Points
- Individual Tutorials

4. Design

- Design Elements & Principles
- Modelmaking

5. Critique

- Presentation of Design Models
- Group Critique
- Feedbacks

- Professional -

(20 Days)

Art, Craft & Design

- Symbolism, Messages & Meaning

Market Positioning

- Segments & Characteristics

The Design Process

- Workflows & Project Phases

Mini-Projects

1. Low Material Value, High Symbolic Value
2. Functionless Object
3. Low Cost but Precious

Workshops

1. Function: Primary vs. Secondary
2. Aesthetics: Abstract Compositions
3. Portfolio: Presenting Your Work

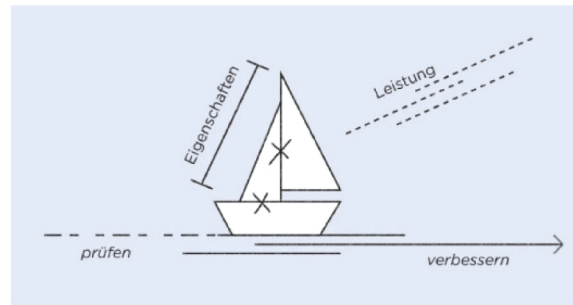
Excursions

Galleries, Boutiques, Artist Workshops,
Subject-relevant Locations



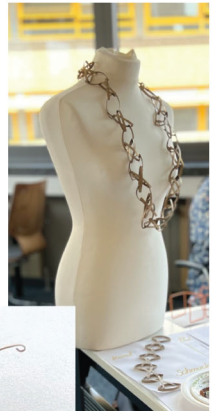
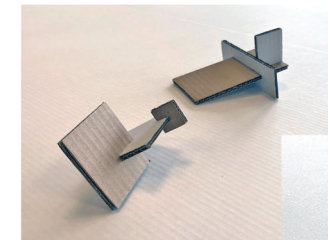
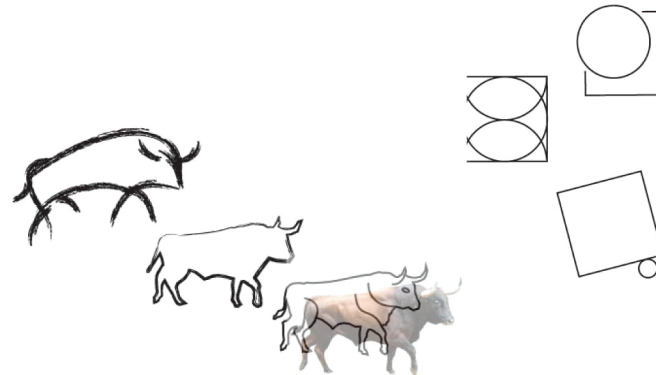
Course Content

- Design in Practice -



Through set briefs, workshop sessions and tailored excursions, we dissect the mechanics of design:

- Concept Development -
- Research Methods -
- Modelmaking -
- Assessment of Designs -
- Methods of Critique -



Course Structures

- Gemmology -

- Theory Elements -

Lesson 1

Introduction: Working with Gems

- Handling (Loupe, Tweezers)
- Presentation (Care of, Lighting methods)
- Trading (Pricing, Inventories, Reports)

Lesson 2

Group Excursion: Mineralogy Museum

- Formation (Geological processes)
- Crystallography (Crystal growth, structures)
- Mining (Deposits, Recovery)

Lesson 3

Gemstone Identification

- Loupe Work (Gemstone Observation)
- Instruments (Refractometer, Microscope etc.)
- Lab Services (Advanced testing, field gemmology)

Lesson 4

The Gem Trade: Behind the Scenes

- Cutting & Treatments
- Synthetics & Imitations
- Transparency, Sustainability, Consumer habits



- Practical Elements -

Lesson 1-2

Diamond Grading

- 4 Cs Methodology & Tools of the Trade
- Lab: Grading with Microscope & Loupe

Lesson 3

Coloured Stone Grading

- 4 Cs Methodology & Pricing Systems

Lesson 4

Pearl Grading

- Types, categories and value factors

Lesson 5/6

Gemstone Identification

- Methodology & Instrumentation of the lab
- Synthetics & Imitations

Lesson 7

The Gem Trade

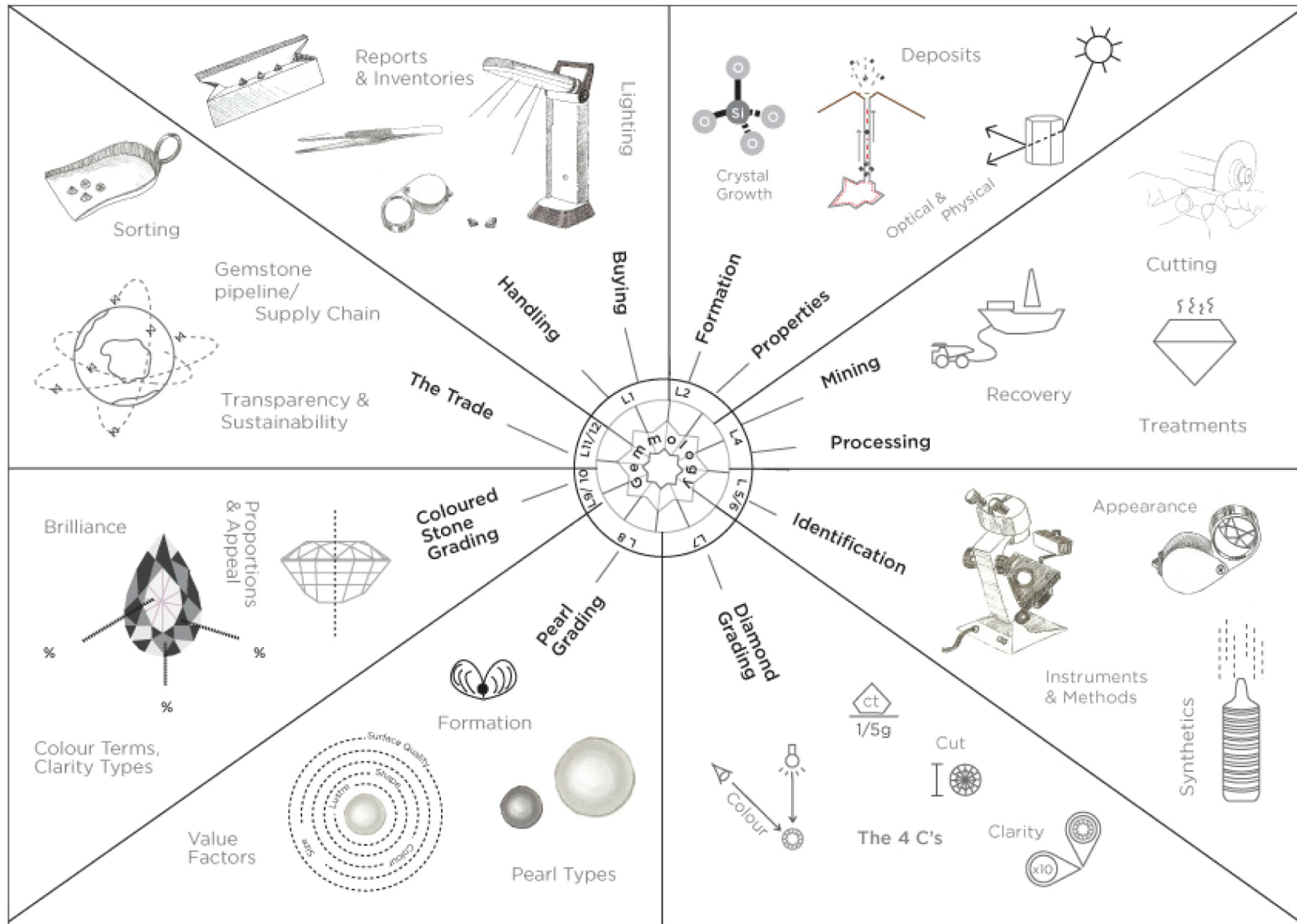
- Sourcing & Selecting, Current topics

Lesson 8

Course Review

- Content Review, Discussion & Exam

Course Overview



Course Content

- Theoretical Knowledge -

Eigenschaften -> Optik

Lichtbrechung
Wann ein Lichtstrahl von einem Medium schräg in ein anderes übertritt, deutlich verlangsamt und manchmal auch gebeugt wird.

Anisotropie (Doppelbrechung)
Wann ein Lichtstrahl beim Eintritt in einen Kristall gebrochen und gleichzeitig in 2 Strahlen zerlegt wird.

Pleochromasie
Unterschiedliche Farben oder Farbtiefen in Doppelbrechender Edelsteine, die in verschiedenen Richtungen aufweisen.

Lichtbrechung bei Spinell

Doppelbrechung bei Smaragd

Pleochromasie bei Saphir

Schliff -> Graduierung

1. Brillanz %
- Lichtreflexionen
- Fenster %
- Licht-Leckage
- Löschung %
- dunkle Stellen

2. Proportionen
- Formreiz (Optik)
- Profil Symmetrie
- Gesichts Symmetrie

3. Äußere Merkmale
- Politur
- Facettensymmetrie

Lichtverhalten
Schliffbedingt

EX HERVORRAGEND VG SEHR GUT G GUT F MITTEL P GERING

Kristallform -> Habitus

tafelig nadelig säulig spießig gedrungen körnig

Habitus: Die Gestalt der Kristallausbildung



Through presentations, mock scenarios and a museum excursion, we encounter:

- Scientific, Aesthetic and Commercial principles -
- The 4 C's quality grading language -
- Trade terms and their meaning -
- Global trading systems -
- Industry players and current issues -

Prospektion -> Die Suche

1. Süd Afrika, 1866
Der "Eureka" Diamant wird auf einem Bauernhof entdeckt.

2. Der "Vaal", 1869
Der "Star of Africa" wird am Ufer des Flusses Vaal entdeckt.

3. Kimberley, 1869-71
Die Entdeckung der ersten großen Lagerstätten.

4. De Beers Mine, 1888
Cecil Rhodes gründet seine Firma und kauft alle anderen Kimberley "Claims" auf

5. London, 1900
Die Beers steuert 90% der Diamantgewinnung und damit der globale Preisstellung.

Dem Fluss hinauf folgend... bis zur Quelle... Wird die Gewinnung... industrieller

Gewinnung -> Bergbauregionen

◆ Diamant
 ◆ Saphir
 ◆ Rubin
 ◆ Smaragd
 ◆ Aquamarin
 ◆ Quarz
 ◆ Topas
 ◆ Turmalin

Synthetisierung -> Eine Geschichte

1900: Quarz Hydrothermal

1930er: Rubin "Verneuil"

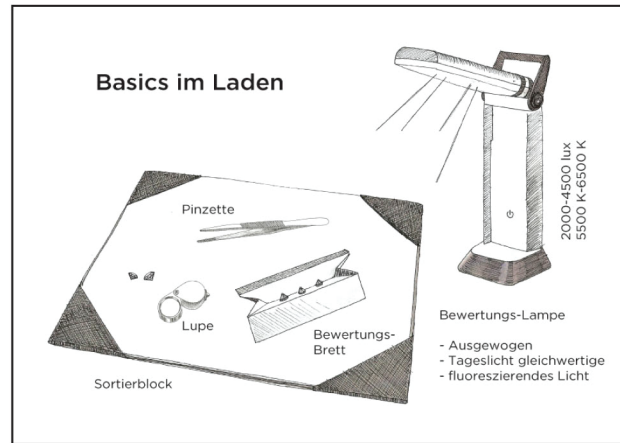
Smaragd Flux

1950er: Diamant Hochdruck Hochtemperatur



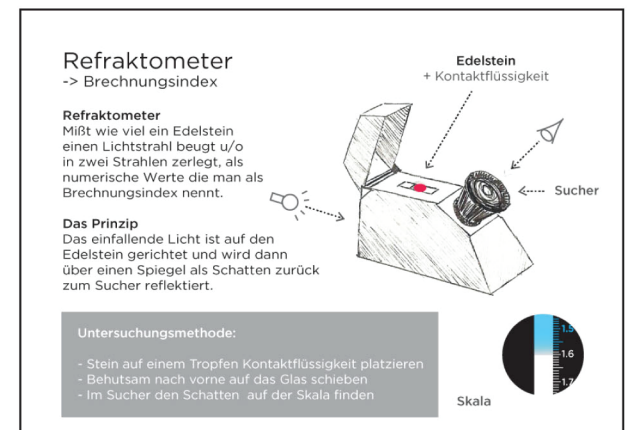
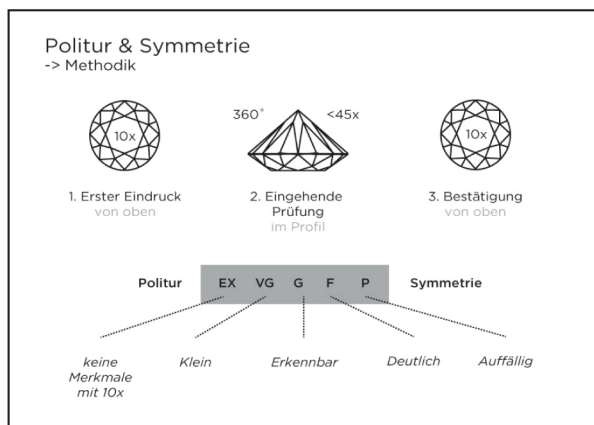
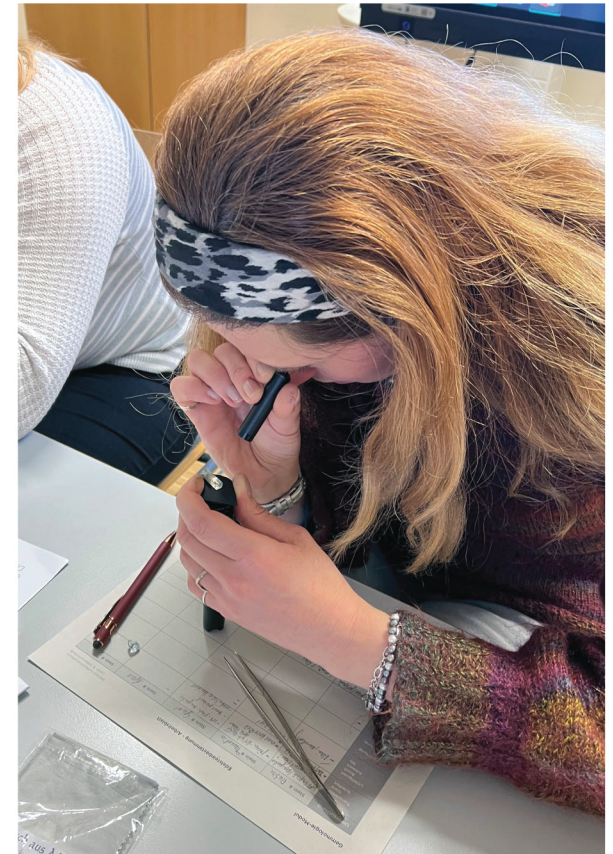
Course Content

- Practical Skills -



A series of hands-on workshops introducing the instruments and methodology for:

- Gemstone Identification -
- Diamond, pearl & coloured stone grading -
- Detection of treatments, synthetics & imitations -
- Sorting, selecting and pricing of goods -



ROWENA MURRAY



Want to Know More?

For course enquiries, get in touch at contact@rowenamurraydesign.com
or call +49 (0)176 2295 9403